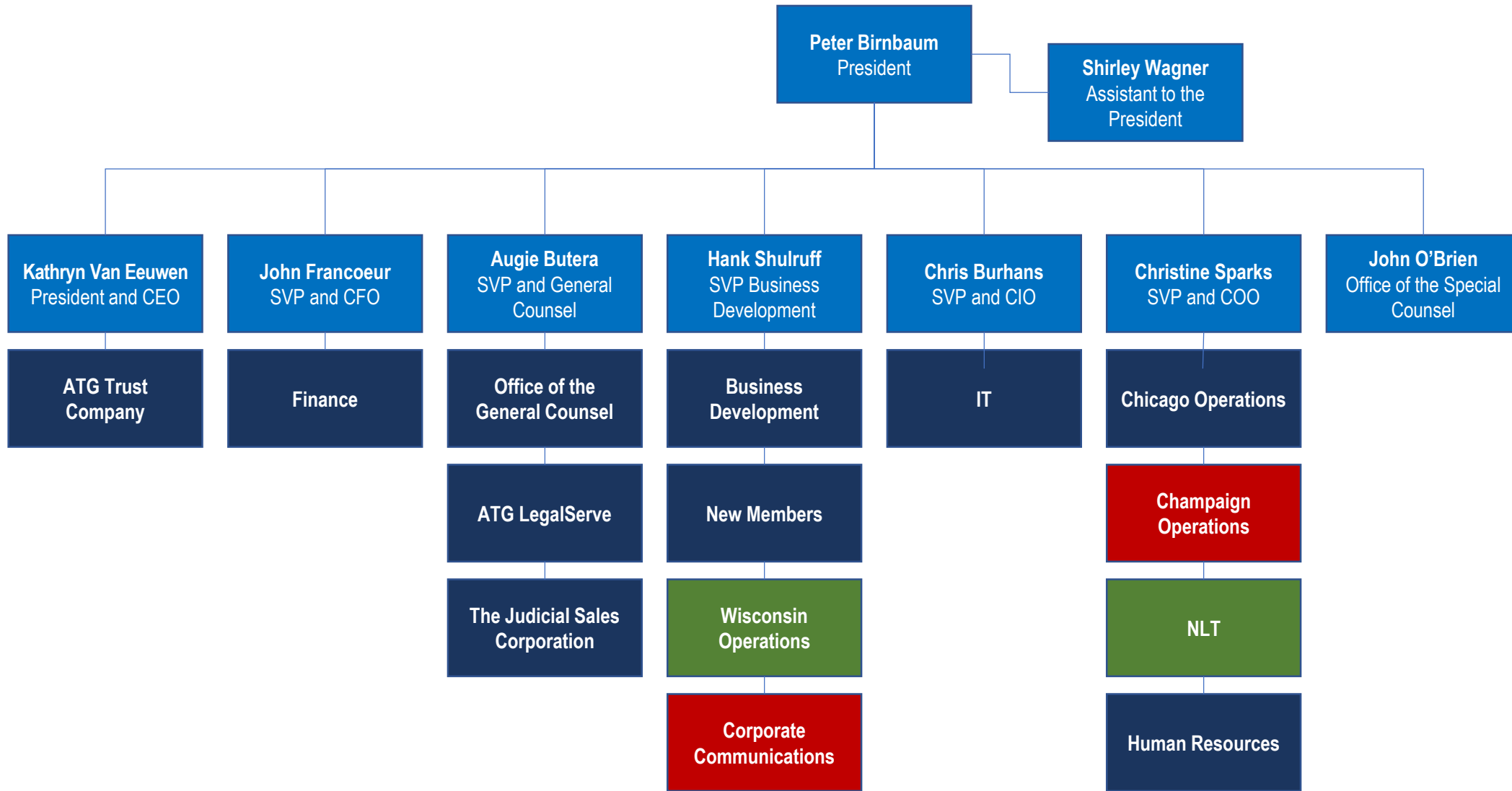
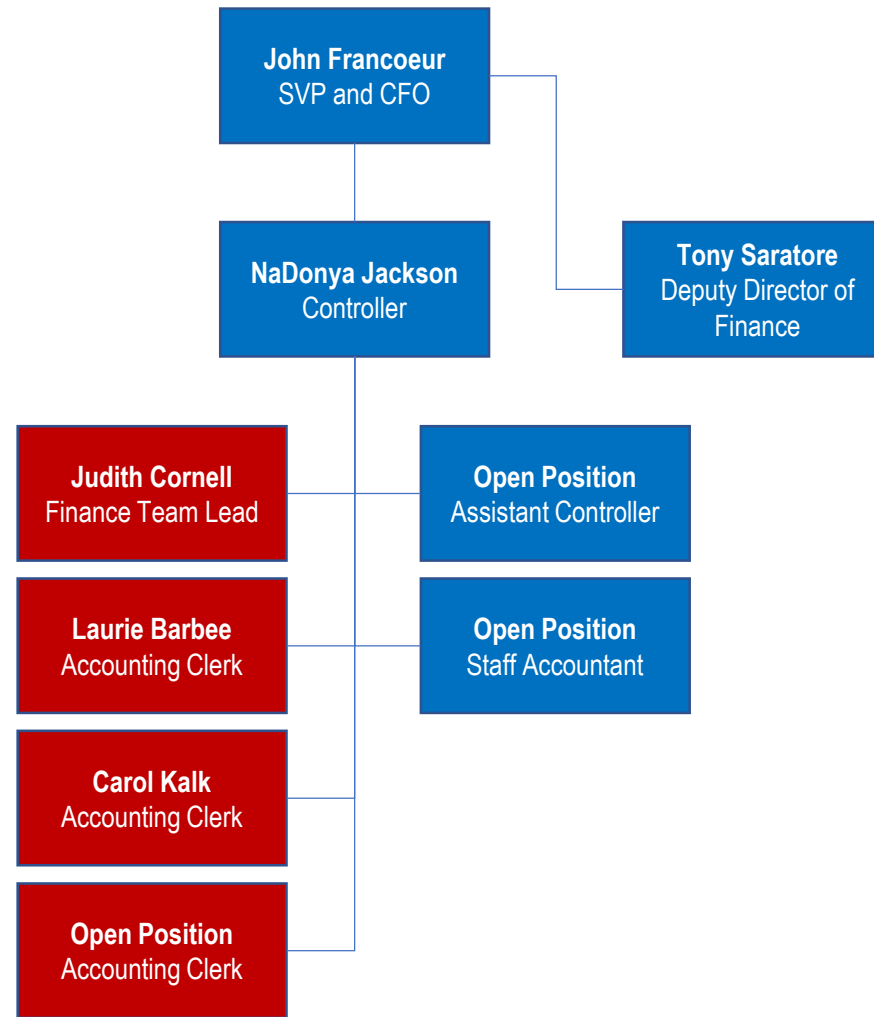
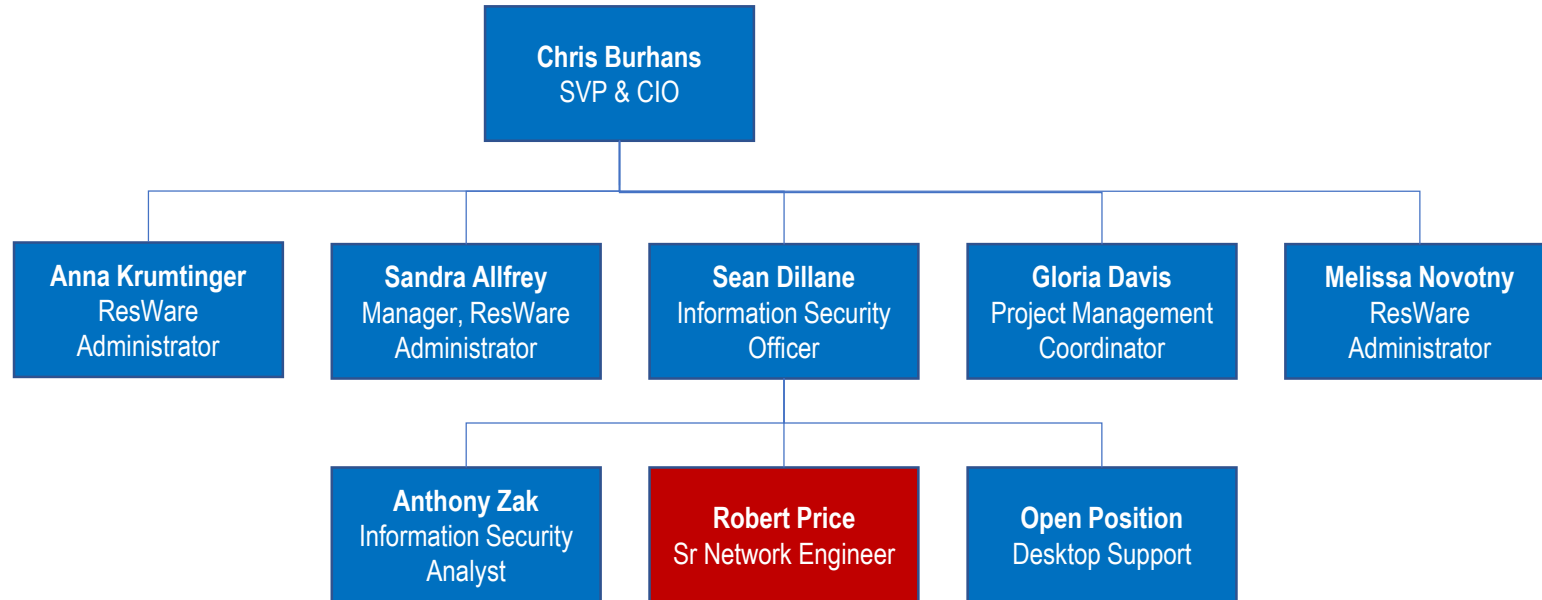


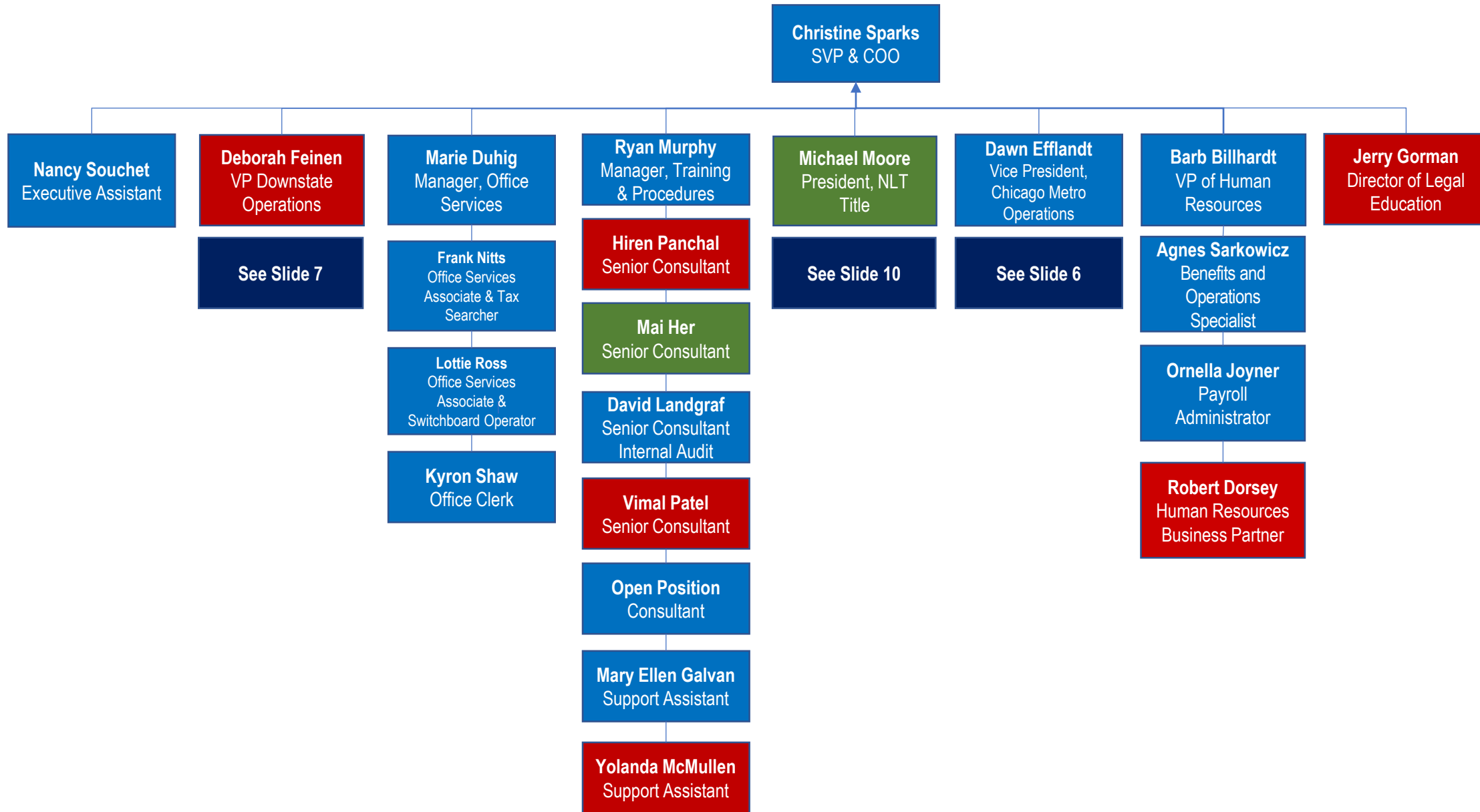
Organization Charts

Effective February 25, 2020









Christine Sparks
SVP & COO

Dawn Efflandt
Vice President,
Chicago Metro
Operations

Kelly Pawlik
Manager, Closing
Services

Terry Hennigan
ATG Direct Manager
& Underwriter

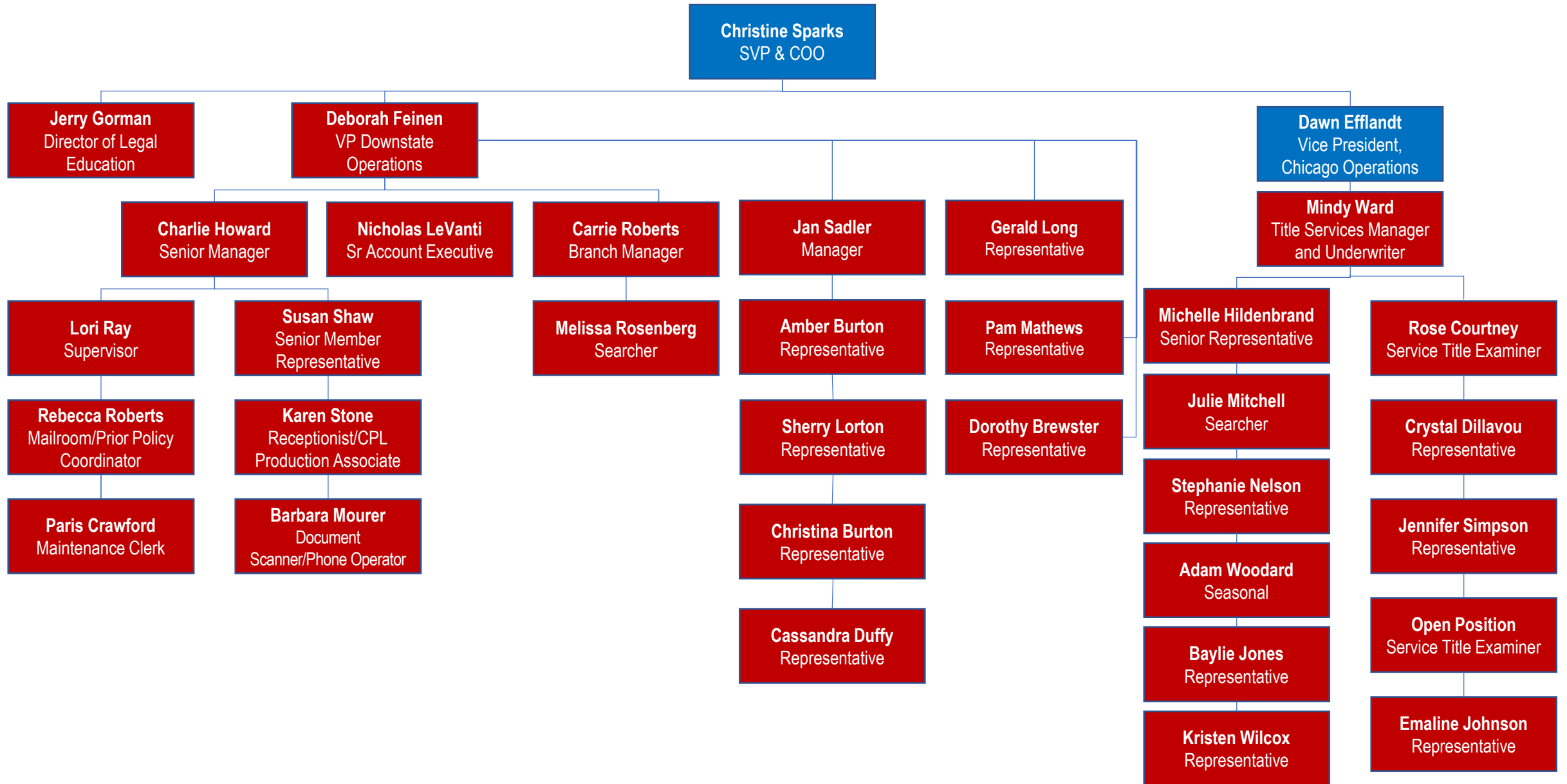
Eric Bacys
Manager, Disbursement
Accounting

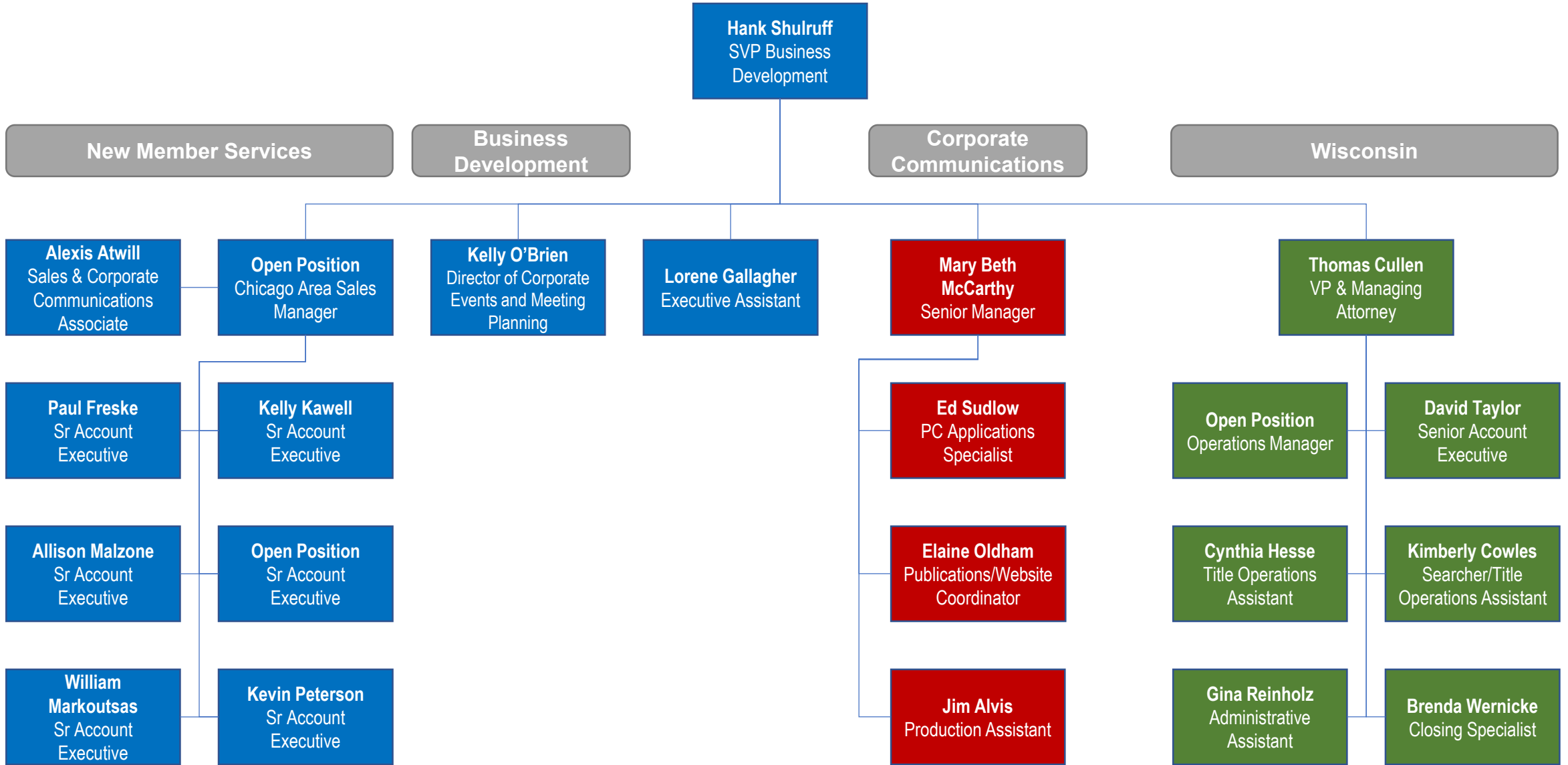
Patty Woods
Manager, Closing
Administration

Vicki Voigt
Manager,
Recording

Barb Fuller
Manager, Search

Janeil Price Senior Office Administrator	Tracy Cazeau Assistant Manager	Sandra Winston Representative	Ashley Mucha Service Title Examiner	William Larson Representative	Stephanie Barnett Representative	Rebeca Leibas Representative	Jessica Knoeckl Assistant Manager	Robert Rivas Supervisor/Searcher
Erik Rivas Office Administrator	Debra Egan Representative	Robert Reyes Representative	Georgeann Losurdo Residential Title Examiner	Bobbie Steele Representative	Katherine Roche Representative - Scheduler	Janel Robles Representative	Eric Hammond Searcher/Abstractor	Mark Byerly Searcher
Erin Mugnaini Office Administrator	Debra Deppe Representative	Donovan Holmes Scheduling Representative		Brenda Monteiro Representative	Megan Svymbersky Senior Closing Representative & Team Lead	Linda Harenberg Representative	Luis Zavala Codilis Processor	Joanne Golesteanu Searcher
Maria Eggebrecht Office Administrator	Donna Koss Representative	Open Position Representative		Raveena Cornelious Representative	Tara Reece Closing Representative		Luis Cabrera Tax Searcher	Isabel Escotto Codilis Processor
Tameika Smith Office Administrator	Claudia Valdez Representative	Open Position Representative					Marvin Owens Searcher	Dawn Markunas Abstractor/Processor
Julissa Quiroga Office Administrator	Ryan Hoffman Representative	Jessica Pickett Email and Package Processor					Andres Liboy Searcher	Open Position Customer Service Representative
Sonia DeLuna Office Administrator	Tammy Climer Representative							





August Butera
SVP & General
Counsel

Traci Nally
Senior Manager
Claims & Litigation

Megan Scharlau
Executive Assistant

Donna Kogut
VP & Managing
Attorney

Tania Snyder Stori
Corporate Counsel

Arden Miner
Vice President
Compliance Counsel

Greg Miely
Senior Manager,
Underwriting

Pamela Murphy-Boylan
President & CEO
Judicial Sales

Kelly Kienzle
President, ATGLS

Beth Faber
Escrow Department
Manager and Claims
Counsel

Amy Guthrie
Tax Specialist

Karen Courtney
Commercial
Underwriting
Attorney

Gina Llanas
Commercial &
Residential
Underwriting Attorney

Sara Smith
Vice President, Compliance,
ATG Trust Company

Lowell Krahn
Sr Underwriting
Attorney

See Slide 11

See Slide 12

Marian Baratta
Claims Paralegal &
Hold Harmless Mgr

Jessica Fish
Claims Assistant

Molly Vaulman
Commercial Title &
Closing
Administrator

Sharon Lampkins
Construction Escrow
Administrator

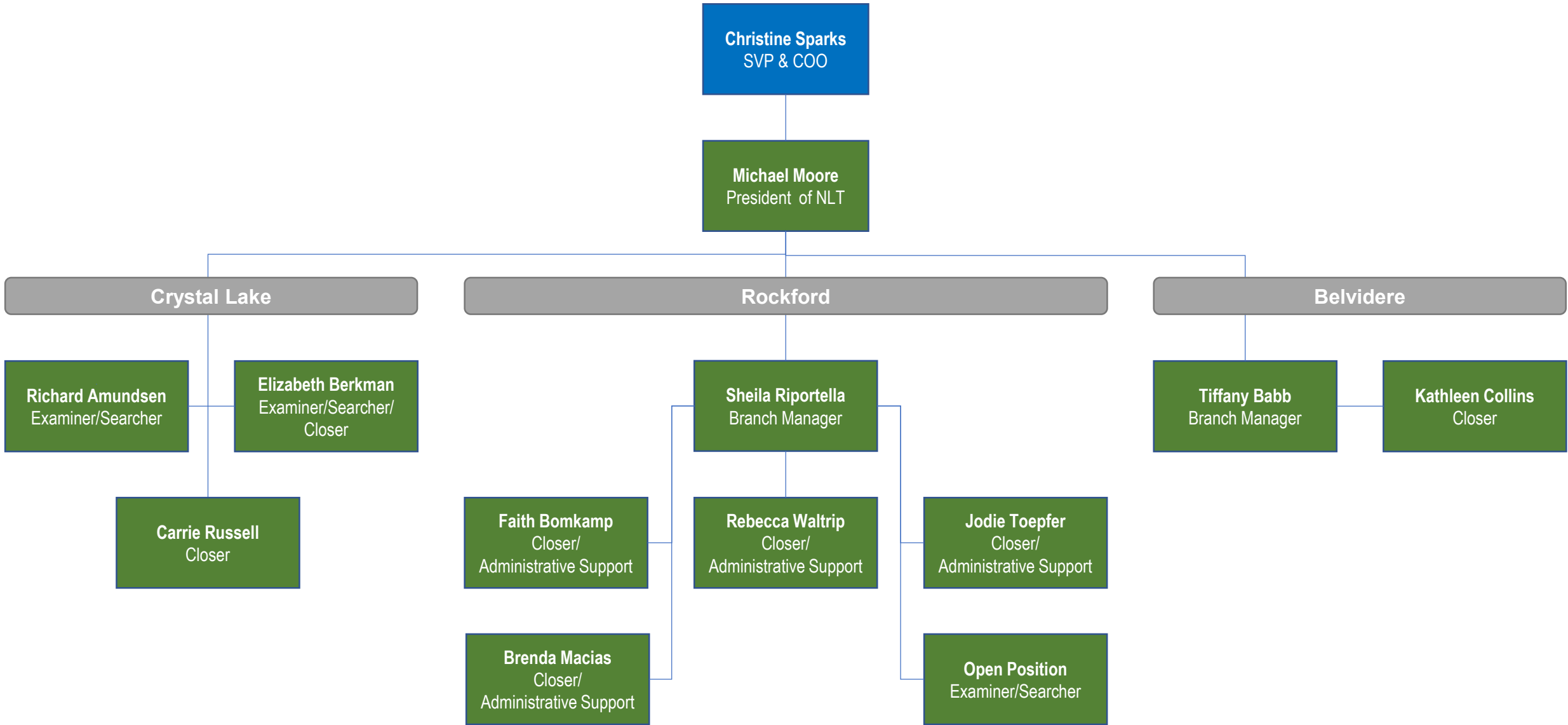
Alisa Swerdlove
Staff Attorney

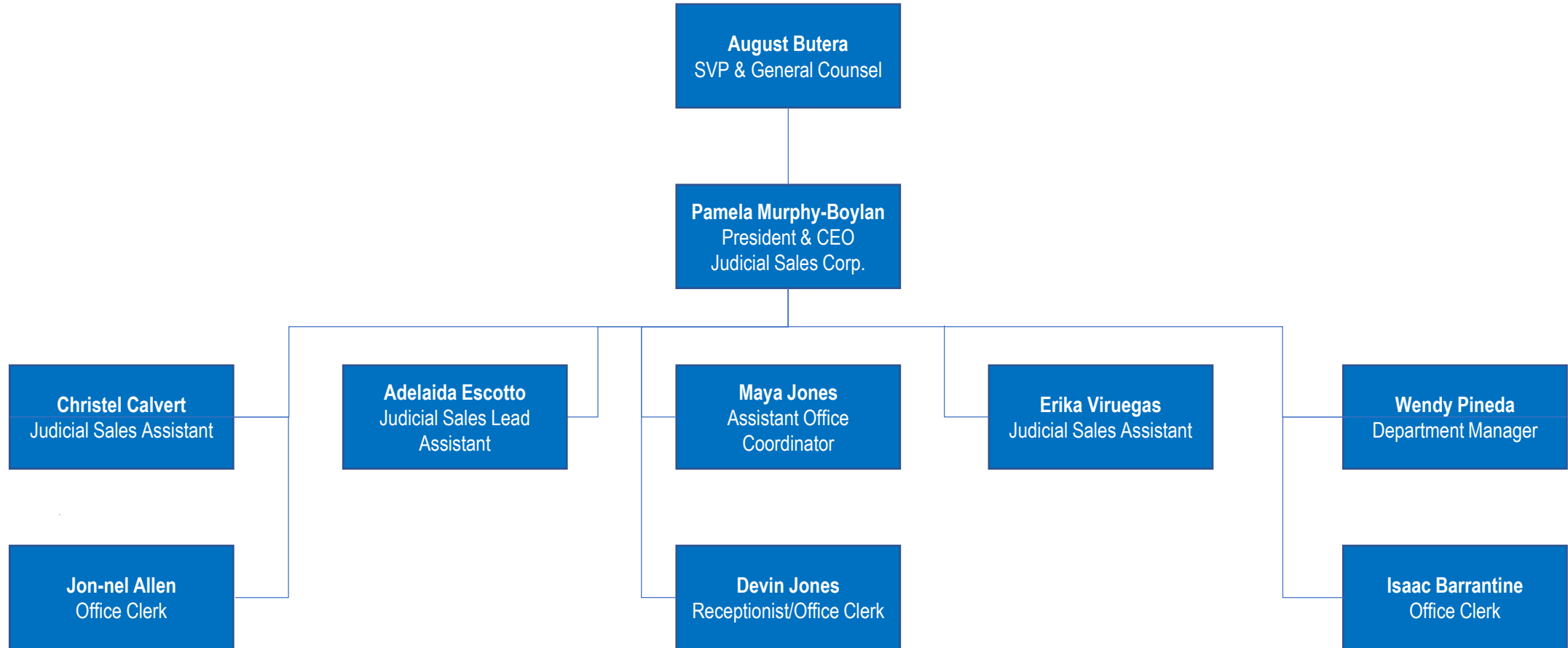
Barbara Rapp
Claims Assistant

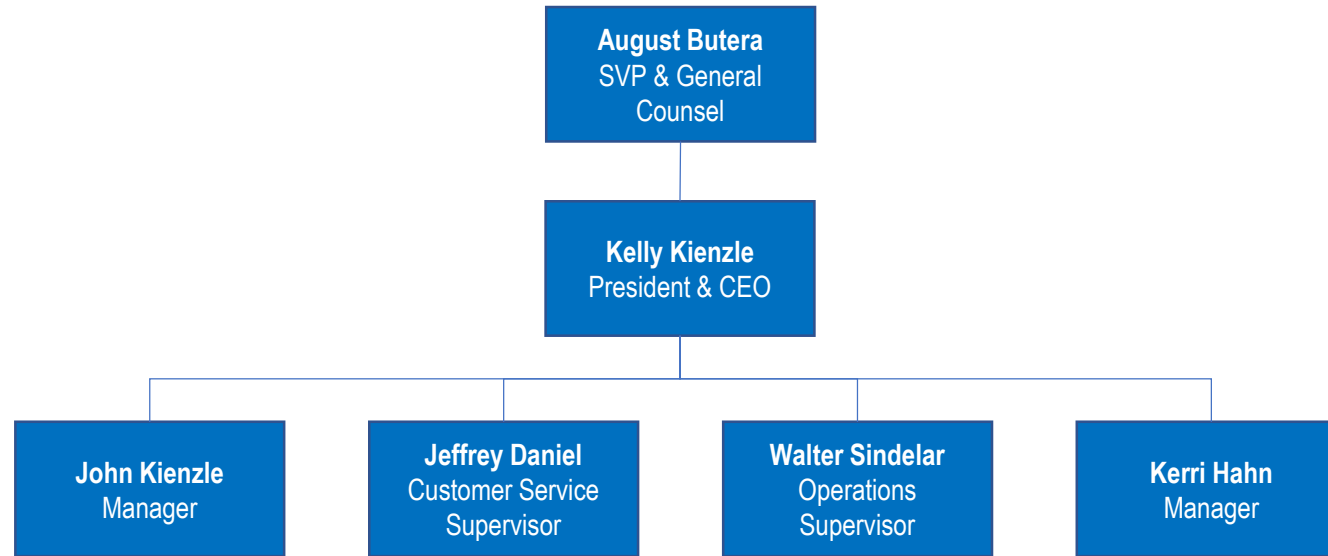
Sheila Buckley
Construction Escrow
Representative

Jill Slattery
Commercial Title
Representative

Alexandra Kachow
Law Clerk







Hollund Shaf
Client Service Representative

Steven Krueger
Client Service Representative

Michael Mitchell
Client Service Representative

Sandra Sterrett
Accounting Supervisor

Asia Johnson
Client Service Representative

Thalia Roldan
Client Service Representative

Veronica Moreno
Sr. Client Service Representative

Open Position
Client Service Representative

Open Position
Client Service Representative

Open Position
Filer/Clerk

Susana Ramirez
Client Service Representative

